

# HTTP-based Dynamic Call Routing

## Outbound SIP Trunks

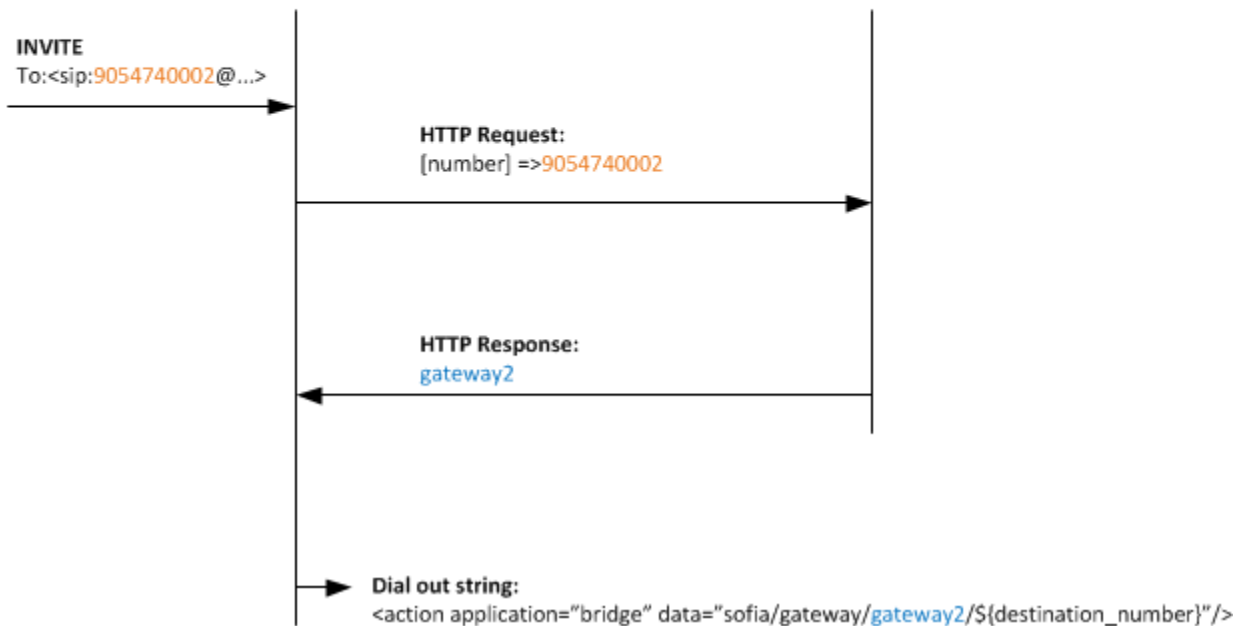
The dialplan can be configured to perform HTTP requests and route the call based on the HTTP response.



SBC



Web Server



To do this, you will need to use the **curl** application inside your call routing table to perform the HTTP request. The return value from the HTTP request will be stored in the variable **curl\_response\_data**, and return code **curl\_response\_code**.

Example call routing:

```
<extension name="to-gateway">
  <condition field="${destination number} expression="(.)">
    <action application="set" data="curl_timeout=1"/> <!-- Timeout Delay in Seconds -->
    <action application="curl" data="http://mywebserver.com/getnumber.php?number=${destination_number}"/>
    <action application="log" data="Dialing out on gateway:${curl_response_data} response-code:${curl_response_code}"/>
    <action application="bridge" data="sip/gateway/${curl_response_data}/${destination_number}"/>
  </condition>
</extension>
```

Your Web Server should return a response like this:

gateway1

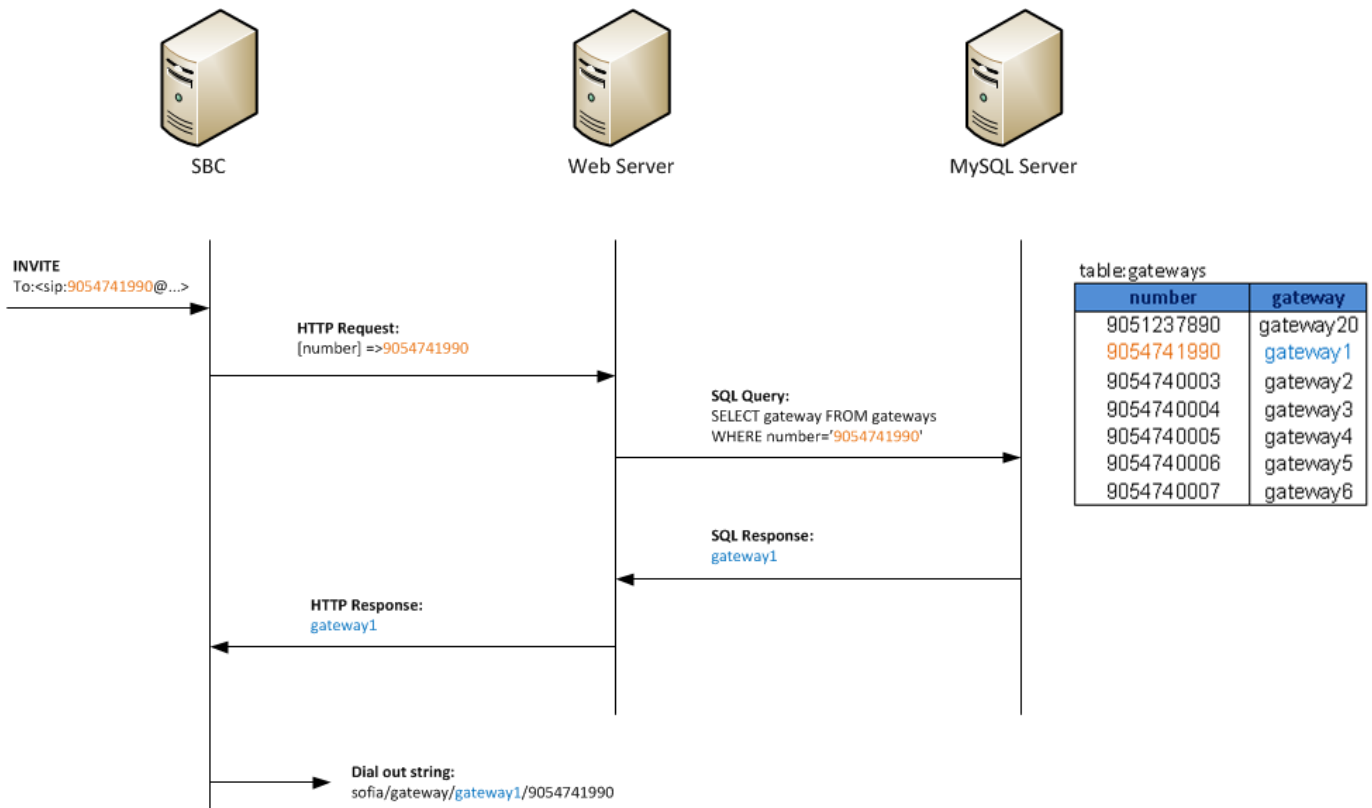
## Sample code

A sample php code that you can use for debug can be downloaded from this link:  
[Sample Test PHP script](#)

The sample code will always return 'gateway1'.

## Sample code to query database

The webserver can be extended to retrieve the gateway name from a database.



You can download the sample PHP code that will connect to a MySQL Database from the link below:  
[Sample PHP Script](#)

The sample PHP script accepts the following parameters:

- db\_url**: URL of database to connect to. Default: *localhost*
- db\_user**: Username to connect to database. Default: *root*
- db\_password**: Password to connect to database. Default: *sangoma*
- db\_name**: Database name. Default: *sangoma\_sbc*
- db\_table**: Table name. Default: *gateways*
- db\_number\_column**: Name of column that contains the number to look-up. Default: *number*
- db\_gateway\_column**: Name of column that contains the gateway name. Default: *gateway*

So the generated SQL query is:

```
SELECT <db_gateway_
column> FROM <db_ta
ble> WHERE <db_num
ber_column>=<number>
```

For example, using this line from the dialplan:

```
<action application="curl" data="http://localhost/getgateway.php?
db_table=gateways&db_number_column=number&db_gateway_column=gateway&number=9054741990"/>
```

Will result in this SQL query:

```
SELECT gateway FROM gateways WHERE number=
9054741990
```